

# Art Academy

Parent Handbook

Inspiring Creativity  
Building Confidence  
Developing Artistic Excellence



Artist: Ayla Matak  
TH4 - 2026

# Welcome to The Arts Academy

The Arts Academy is a selective extension program designed for Year 5 and Year 6 students who demonstrate a high level of creativity and a passion for the Arts.

The program provides opportunities for students to develop their artistic talents, explore new creative experiences, and challenge themselves through advanced learning in The Arts.

Students attend the Arts Academy once a week and participate in engaging, hands-on learning experiences that encourage innovation, imagination, critical thinking, and creative problem-solving.

## What Does The Arts Academy Offer?

Students in the Arts Academy will:

- 🎨 Develop advanced Visual Arts skills
- 🧠 Strengthen creative and critical thinking
- 🤝 Collaborate with like-minded peers
- 🎨 Engage with professional artists and industry experts
- 🏆 Showcase their work through exhibitions, performances, and special events
- ☀️ Build confidence, resilience, and independence as young artists



Artist: Saoirse Byrne  
Blue Willow Plate  
TH3 - 2026

# Why Join The Arts Academy?

The Arts Academy provides students with opportunities to:

- ✨ Discover and nurture their creative talents
- ✨ Build confidence and self-expression
- ✨ Work with passionate and talented peers
- ✨ Experience authentic artistic opportunities
- ✨ Develop skills that support success across all learning areas
- ✨ Create, perform, collaborate, and shine

## Who Can Apply?

The Arts Academy is open to Year 5 and Year 6 students who demonstrate:

- Creativity and imagination
- A passion for the Arts
- Commitment to learning
- Willingness to take creative risks
- Positive participation and collaboration skills

Please note:

*A student's grade in Art alone does not automatically qualify or exclude a student from selection into the Arts Academy.*



Artist: Kaia Duff  
Tutankhamun  
PC1 - 2026

*Our goal is to help students to develop their artistic talents beyond primary school.*

# Selection Process

## Step 1: Expression of interest and submission of artwork

Families complete an expression of interest and students submit a piece of artwork, completed in their own time to the Art room.

## Step 2: Arts Workshop

During the workshop, students will complete a drawing activity within a set time frame.

Staff will observe:

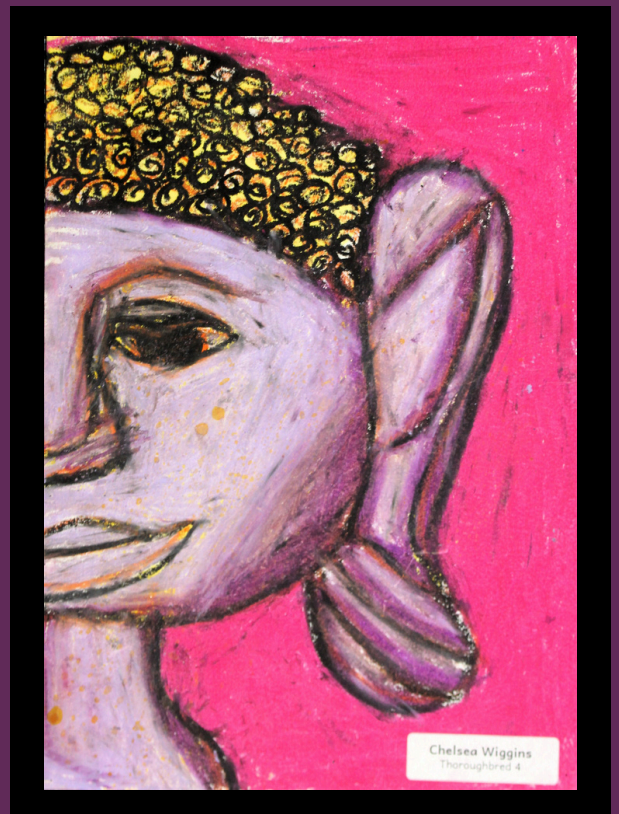
- Creative thinking
- Artistic skills
- Engagement and effort
- Ability to follow instructions
- Approach to problem-solving
- Applying staff feedback to their artwork

## Step 3: Selection Panel

A selection panel will review all evidence collected during the workshop and determine successful applicants.

## Step 4: Notification

Families will receive written notification regarding the outcome of the selection process.



Artist: Chelsea Wiggins  
Buddah  
TH4 - 2026

# Student Expectations

Students selected for the Arts Academy are expected to:

- ✓ Participate positively in all activities
- ✓ Listen carefully and act on feedback
- ✓ Show respect towards staff, peers, and visitors
- ✓ Care for equipment and resources
- ✓ Demonstrate persistence and commitment
- ✓ Contribute constructively to collaborative tasks
- ✓ Be willing to challenge themselves creatively

Students are also responsible for completing any classroom work missed as a result of attending the Arts Academy.

## Maintaining a Place in the Program

Students are expected to uphold the School Values and expectations of the Art Academy.

If concerns arise regarding participation or behaviour:

1. The Teacher in Charge will contact parents/caregivers.
2. A meeting may be arranged with the family, student, and school representatives.
3. A support plan may be developed if required.

Students who are suspended from school may be temporarily removed from the program.



## GROWING AND LEARNING TOGETHER

---

*We look forward to welcoming the next generation of Woodland Grove artists.*

---

For further information, please contact:

Mrs Storm Frees      [storm.riseborough@education.wa.edu.au](mailto:storm.riseborough@education.wa.edu.au)

Mrs Marisa Gallin      [marisa.gallin@education.wa.edu.au](mailto:marisa.gallin@education.wa.edu.au)

