

Set 1

Day 2

MORNING MEETING VIDEO

SeeSaw

MORNING FITNESS

Deck of Fitness

Please refer to provided handout for instructions

LITERACY Reading

Comprehension – *The Big Race*

A comprehension worksheet that allows children to work on the comprehension strategy understanding sequence. Children read the text and answer the questions either in a workbook or using the sheet provided. There is a Crazy Creative Challenge that can be completed also if time allows.

Spelling

Look, Cover, Say, Write & Check. Please use the provided template from Monday.

CRUNCH & SIP

LITERACY

Grammar

Verb Past Tense Worksheet

What is a verb? What is Past Tense? Please click on the link to find out more about verbs. Children add simple past tense verbs to complete the sentences.

English Grammar for Beginners- Regular Verbs in Past Simple Tense.

<https://www.youtube.com/watch?v=QIZXd-m6Pdw>

Editing Bees

Use the editing symbols provided to edit the text and then rewrite it correctly. There are twenty errors.

LUNCH

MINDFULNESS

www.smilingmind.com.au

Please select the **Year 4 Student at Home Practice** and complete **Bubble Journey** program.

NUMERACY

Basic Facts

Please complete the basic facts activity for **TUESDAY**. This basic fact sheet is provided. You have 1 minute!

Times Tables

Please practice your 6 and 7 times tables. Write them on a piece of paper.

Operations 5 × Colour Fun!

Children find the answer to each multiplication sum and then colour that section with the corresponding colour represented in the table provided.

Mathematical Activity

Subtraction to the Thousands Place Value with Regrouping

Please complete the activity for subtracting 4 digit numbers with regrouping. Make sure you show your working out! Once you have completed the worksheet, you may complete a Numeracy activity on Study Ladder.

AFTERNOON RECESS

SCIENCE

Read about the 'Bean Plant Life Cycle' and highlight or underline important information. Write answers to the questions.

DECK OF FITNESS

ACTIVITY GOALS

- I will perform exercises with perfect form and at a safe speed.

TEACHING TIPS

- Use Proper Form
- Pace Your Movement
- Have Fun!

ACTIVITY SET-UP & PROCEDURE

Equipment:

- 1 deck of cards
- Fun music and music player

Set-Up:

- Shuffle and place the deck of cards face down where everyone can reach it.
- Create an exercise chart using the list shown under the "Tips" section below. (It's okay to modify your chart using different exercises.)



Activity Procedures:

- Today's friendly competition is Deck of Fitness. The object of the game is to do as many repetitions as you can of each exercise.
- When you draw a card, you'll use the exercise chart to determine which exercise to do. Complete the number of repetitions shown on your card. For example, if you draw the 4 of hearts, perform 4 jumping jacks.
- Face cards (e.g., a king) are worth 10 repetitions. Aces are worth 11 repetitions.
- In round 1, you and your friends will play together and select 1 card for everyone to perform. In round 2, you can compete: Everyone will choose their own card and complete their own repetitions/exercises.

Tips:

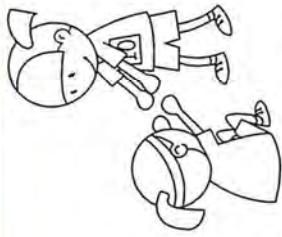
- Make sure you pace your activity safely. Don't give up form for the sake of speed.
- Be sure you have enough activity space for safe movement.
- Follow this format, or create your own:
 - Hearts = Jumping Jacks
 - Clubs = Push-Ups
 - Diamonds = Invisible Jump Rope Jumps
 - Spades = Squats

EATING
HEALTHY
101

- Hydration Station:** Be sure to stay hydrated before, during, and after exercising. Water has zero calories and is the best way to stay hydrated!

The Big Race!

1



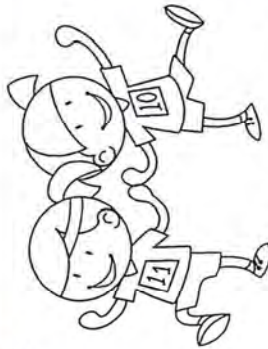
Molly's friend stopped to help her up.

2



Molly tripped over!

3



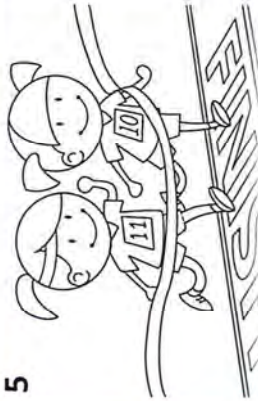
Molly and her friend were so happy they finished the race.

4



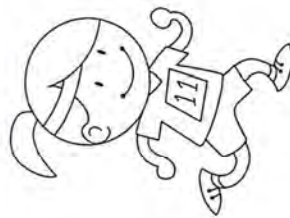
Molly was ready to start the race.

5



Molly and her friend crossed the finish line together.

6



Molly ran as fast as she could.

The Big Race!

1. Look at the pictures. Place them into the correct order.

1st box number ____ 4th box number ____

2nd box number ____ 5th box number ____

3rd box number ____ 6th box number ____

2. Rewrite the story of the big race in the correct order, using the following time sequence words:

first, then, next, after that, soon after, finally

3. Explain how the story could have been put in a different order so that it had a new ending.

4. What do you normally do at the start of a race?

a) run as fast as you can

b) line up, ready to run

c) cross over the finish line

CRAZY CREATIVE CHALLENGE

Create your own picture story.

○ Use six boxes.

Name _____

Date _____

The Big Race!

1. Look at the pictures. Place them into the correct number order.

1st box number _____

4th box number _____

2nd box number _____

5th box number _____

3rd box number _____

6th box number _____

2. Rewrite the story of the big race in the correct order, using the following time sequence words:

first, then, next, after that, soon after, finally

3. Explain how the story could have been put in a different order so that it had a new ending.

4. What do you normally do at the start of a race?

- a) run as fast as you can
- b) line up ready to run
- c) cross over the finish line

Verb Past Tense Worksheet

Name: _____

1. Yesterday we _____ (look) for bugs in the park.
2. We _____ (search) for bugs under rocks and on leaves.
3. I _____ (see) a butterfly. It _____ (fly) past the purple flowers.
4. I _____ (lift) up a big rock and _____ (find) a lady beetle.
5. I _____ (place) it in my bug jar, so that I could show my parents when I _____ (get) home.
6. I _____ (catch) three bugs at the park. I _____ (find) a ladybug, a rhino beetle and a tiny bug that I didn't know.
7. I _____ (think) my brother Sam could help me identify the tiny bug.
8. We _____ (get) out the bug book, and Sam _____ (open) my bug jar to get a closer look. The bug _____ (crawl) up Sam's sleeve.
9. It _____ (give) him a fright, and he _____ (spit) out the water he was _____ (drink).
10. We _____ (laugh) until we _____ (fall) down.



Bees - Editing

Add editing marks to text. There are 20 errors.

there are about 20 000 species of Bees in the world
Bees live together in groups called colonys. There
three types of bees in each colony! There is The
queen bee the worker bee and the "drone".

The queen is, the largest bee in the colony she is the only won that lays eggs. Drones are mail bees, Their only job is to mate with the queen-bee so that she can lay eggs. Worker bees are Female and they do all the work. They clean and protect the hive. collect the pollen and necta to feed the colony and take care of the offspring.

Editing Marks:	
Capital letter	≡
End punctuation	◦ ! ?
Insert a word	λ
Change to lower case	/ l.c.
Take something out	↵
Check spelling	SP ○
New paragraph	¶

Re-write the text correctly:

This image shows a single sheet of white paper with horizontal blue or grey ruling lines. The lines are evenly spaced and run across the width of the page. There are approximately 20 lines visible. The paper appears to be a standard notebook page.

Blank lined paper with horizontal ruling lines.

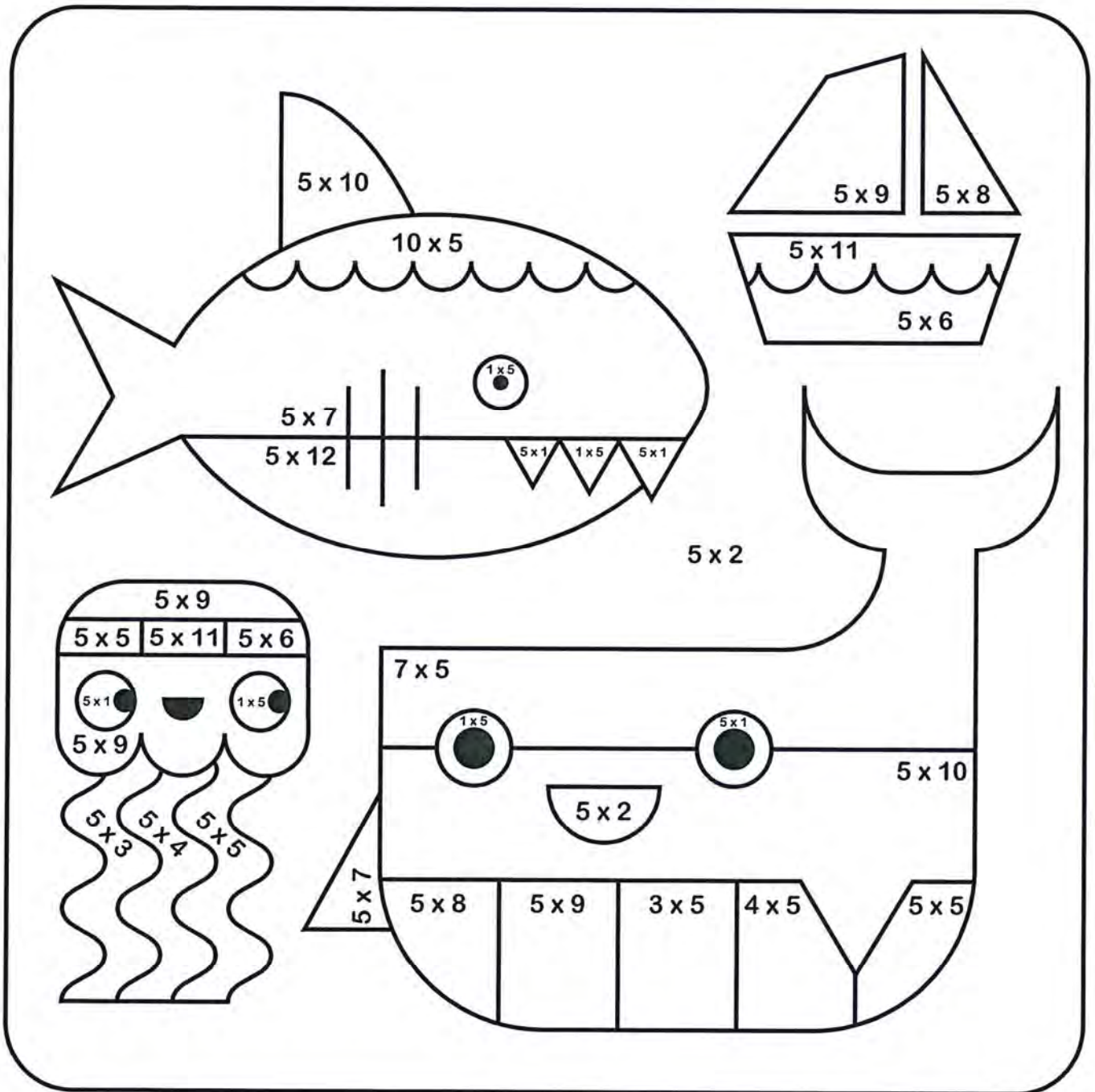
Name: _____ Date: _____



5 x Colour Fun!



Find the answer to the multiplication number sentence and then colour that section the corresponding colour.



5 white

25 yellow

45 pink

10 black

30 dark green

50 light blue

15 red

35 dark blue

55 light green

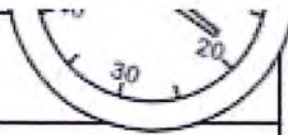
20 orange

40 purple

60 grey



Tuesday



1. $12 + 6 =$ _____

2. $14 + 2 =$ _____

3. $19 + 1 =$ _____

4. $9 + 6 =$ _____

5. $8 + 5 =$ _____

6. $13 + 4 =$ _____

7. $11 + 2 =$ _____

8. $12 + 7 =$ _____

9. $14 + 6 =$ _____

10. $9 + 2 =$ _____

11. $7 + 13 =$ _____

12. $16 + 1 =$ _____

13. $18 + 2 =$ _____

14. $1 + 11 =$ _____

15. $10 + 4 =$ _____



Unit 3 Lesson 1: Subtracting from 4-digit numbers with regrouping

More Practice

1. Find the difference between 5342 and 2635.

$$5342 - 2635 = \underline{\hspace{2cm}}$$

	Th	H	T	O
	5	3	4	2
-	2	6	3	5
<hr/>				

The difference between 5342 and 2635 is _____.

2. Subtract.

a)

$$\begin{array}{r} 3154 \\ - 425 \\ \hline \\ \hline \end{array}$$

b)

$$\begin{array}{r} 4268 \\ - 2678 \\ \hline \\ \hline \end{array}$$

c)

$$\begin{array}{r} 7434 \\ - 1847 \\ \hline \\ \hline \end{array}$$

3. Subtract.

a) $5623 - 538 = \underline{\hspace{2cm}}$

b) $6146 - 1429 = \underline{\hspace{2cm}}$



c) $8453 - 4567 = \underline{\hspace{2cm}}$

d) $9125 - 5698 = \underline{\hspace{2cm}}$



Bean Plant Life Cycle

Beans are legumes: a type of plant with double-seamed pods, containing a single row of seeds.

1



The Seed Germinates

The plant starts life as a seed. The runner bean plant seeds are round, hard and multicoloured, usually red or purple with black spots. The seed begins to germinate and a shoot emerges, usually after about 2 to 3 days.

2



The Plant Grows

The seedling continues to grow and a stem and leaves appear. Roots continue to grow underground. Runner bean plants usually grow to around 3 metres.

3



The Plant Flowers

The plant produces flowers. The runner bean plant usually has red petals, but they can also be white. You can usually see flowers after 6 to 8 weeks.

4



The Flower Produces Fruit

The bean plant produces pods of beans, which is what we can pick and eat, usually after 12 to 14 weeks.

5



The Fruit Releases Seeds

The flower shrivels and seeds fall onto the ground.



6



The Plant Dies

The final stage is when the plant dies. The seeds that are left produce new plants.

Did you know?

- **Annuals** complete their life cycle in one year.
- **Biennials** complete their life cycle in two years.



Bean Plant Life Cycle Questions

1. How many rows of seeds do beans have?

2. What does the plant start life as?

3. When does the shoot pop up?

4. What grows underground?

5. What colour are the flowers on a runner bean plant usually?

6. When can we eat the beans?

7. What happens to the seeds when the flower shrivels?

8. What is the last stage?

Something
Extra?

Look at the seeds leftover from
the fruit and vegetables you eat
at home. Save some.

Try and grow them in a container
with some wet paper towel or cotton.